

Para a querida Orquestra do Limiar

Miniatura Pernambucana

XXVI - Canção e Caboclinho

Beetholven Cunha
2024

Langoroso ♩ = 60

Violino I
f *mp* Solo *mf*

Violino II
f *mp*

Viola
f *mp*

Violoncelo
f *mp*

Contrabaixo
f *mp* pizz

5

Vno. I

Vno. II

Vla.

Vc.

Cb.

9 tutti

Vno. I *f*

Vno. II *f*

Vla. *f*

Vc. *f*

Cb. arco *<f*

13

Vno. I

Vno. II

Vla.

Vc.

Cb.

17

Vno. I

Vno. II

Vla.

Vc.

Cb.

22

Vno. I

Vno. II

Vla.

Vc.

Cb.

mp

mp

mp

mp

mp

27

Vno. I

Vno. II

Vla.

Vc.

Cb.

f

f

f

f

f

32

Vno. I

Vno. II

Vla.

Vc.

Cb.

37

Vno. I

Vno. II

Vla.

Vc.

Cb.

42

rall. Tempo I ♩ = 60

Vno. I

Vno. II

Vla.

Vc.

Cb.

mp

mp

mp

47

oitavas solo

Vno. I

Vno. II

Vla.

Vc.

Cb.

f

53 rall. Rústico ♩ = 152

Vno. I

Vno. II

Vla.

Vc.

Cb.

f *f* *f* *p* *p* *p* *ff* *ff*

div. opcional

div. opcional

59

Vno. I

Vno. II

Vla.

Vc.

Cb.

66

Vno. I

Vno. II

Vla.

Vc.

Cb.

ff pizz Bartok

ff

pizz

73

Vno. I

Vno. II

Vla.

Vc.

Cb.

Measures 73-79. Vno. I: Melodic line with slurs and accents. Vno. II: Rhythmic pattern of eighth notes. Vla.: Melodic line with slurs. Vc. and Cb.: Rhythmic pattern of eighth notes.

80

Vno. I

Vno. II

Vla.

Vc.

Cb.

Measures 80-87. Vno. I: Melodic line with slurs and accents, ending with a first and second ending. Vno. II: Rhythmic pattern of eighth notes. Vla.: Melodic line with slurs. Vc. and Cb.: Rhythmic pattern of eighth notes.

88

Vno. I

Vno. II

Vla.

Vc.

Cb.

Measures 88-94. Vno. I and Vno. II: Marked 'arco', melodic line. Vla.: Silent. Vc. and Cb.: Melodic line.

100

Vno. I

Vno. II

Vla.

Vc.

Cb.

mf

mf

arco

mf

pizz

mf

pizz

mf

112

rall. . . . A Tempo ♩ = 152

Vno. I

Vno. II

Vla.

Vc.

Cb.

pizz Bartok

ff pizz

arco

ff

arco

ff

ff

122

Vno. I

Vno. II

Vla.

Vc.

Cb.

ff

129

Vno. I

Vno. II

Vla.

Vc.

Cb.

Measures 129-135. Vno. I: Melodic line with accents. Vno. II: Rhythmic pattern. Vla.: Melodic line. Vc. and Cb.: Rhythmic pattern.

136

Vno. I

Vno. II

Vla.

Vc.

Cb.

1. *non div*

2. *arco non div*

arco

Measures 136-142. Vno. I: Melodic line with accents. Vno. II: Rhythmic pattern. Vla.: Melodic line. Vc. and Cb.: Rhythmic pattern. Measure 136: 1. *non div*. Measure 137: 2. *arco non div*. Measures 138-142: *arco*.

143

Vno. I

Vno. II

Vla.

Vc.

Cb.

non div

Measures 143-149. Vno. I: Melodic line with accents. Vno. II: Rhythmic pattern. Vla.: Melodic line. Vc. and Cb.: Rhythmic pattern. Measure 143: *non div*.

Miniatura Pernambucana

Violino I

XXVI - Canção e Caboclinho

Beetholven Cunha

2024

Largoroso ♩ = 60

Musical score for Violino I, featuring measures 1 through 38. The score is written in treble clef with a key signature of one sharp (F#) and a time signature of 4/4. The tempo is marked **Largoroso** with a metronome marking of ♩ = 60. The score includes various dynamics: **f** (forte), **mf** (mezzo-forte), **mp** (mezzo-piano), and **tutti**. A **Solo** section is indicated for measures 1-8. The score concludes with a double bar line and a key signature change to two sharps (F# and C#).



44 **rall. Tempo I** ♩ = 60
 3 3 oitavas solo
f

54 **rall.**
p

58 **Rústico** ♩ = 152
 12 *ff*

77

85 1. 2.
 1. 2.

96 7 *mf*

112 **rall. A Tempo** ♩ = 152
 4 2 4 *ff*

127

135 1. 2. non div

143

Miniatura Pernambucana

Violino II

XXVI - Canção e Caboclinho

Beetholven Cunha

2024

Langoroso ♩ = 60

6

12

17

23

28

34

39

rall.

Tempo I ♩ = 60

45

54

rall.

p

58 **Rústico** $\text{♩} = 152$
12

pizz Bartok



76



85



95



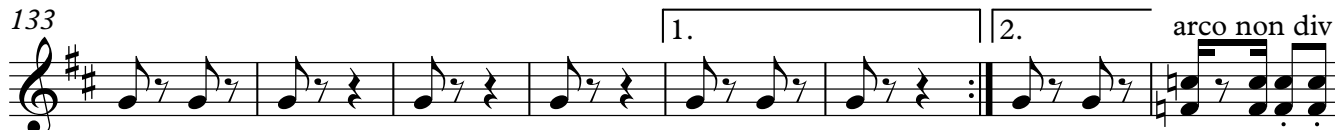
111



124



133



141



145



Miniatura Pernambucana

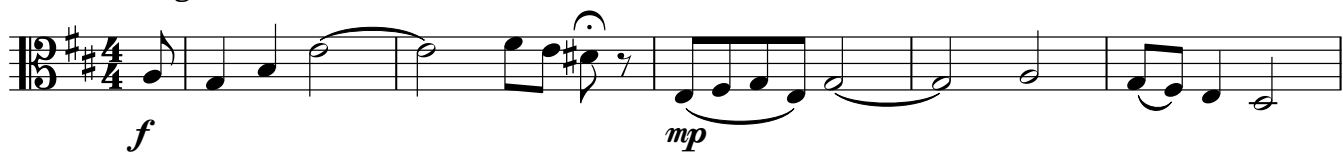
XXVI - Canção e Caboclinho

Viola

Beetholven Cunha

2024

Langoroso ♩ = 60



6



12



16



21



27



34

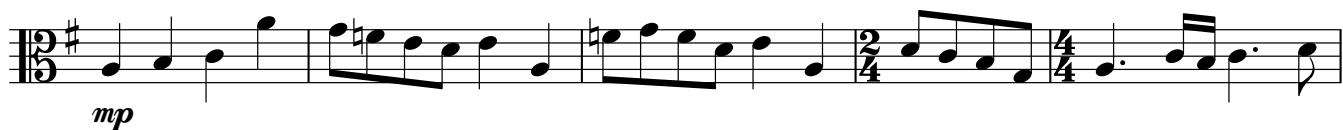


40



Tempo I ♩ = 60

45



50



V.S.

57 **rall.** . . . **Rústico** $\text{♩} = 152$



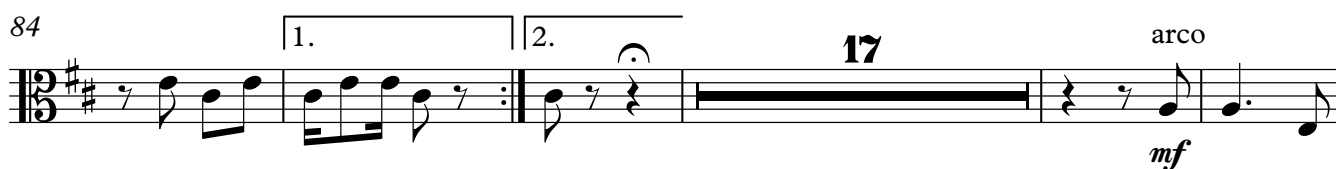
70



77



84

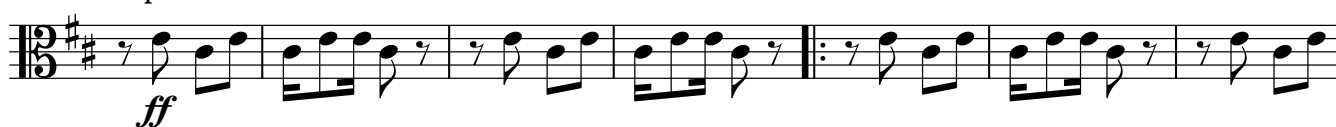


106



A Tempo $\text{♩} = 152$

119 pizz



126



133



140

arco



145



Para a querida Orquestra do Limiar

Miniatura Pernambucana

XXVI - Canção e Caboclinho

Beetholven Cunha
2024

Langoroso ♩ = 60

7

13

20

27

34

43

50

57

64

72

80

f **mp** **f** **mp** **f** **mp** **f** **p** **ff** **f**

rall. **Tempo I** **Rústico** **div. opcional**

2 **1.** **2.**

90



103



119 A Tempo ♩ = 152



127



135



142

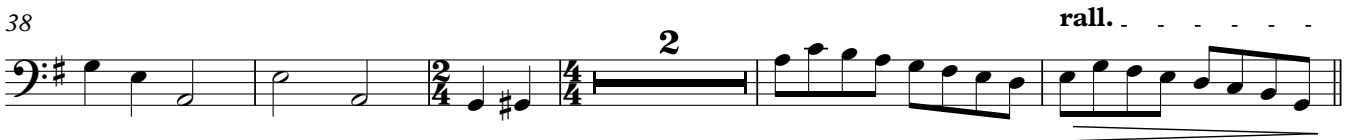


Miniatura Pernambucana

XXVI - Canção e Caboclinho

Beetholven Cunha
2024

Langoroso ♩ = 60



45 Tempo I ♩ = 60



58 - Rústico ♩ = 152
div. opcional

